



**REGIONAL SPECIALISED METEOROLOGICAL CENTRE-TROPICAL CYCLONES, NEW DELHI
SPECIAL TROPICAL WEATHER OUTLOOK**

DEMS-RSMC SPECIAL TROPICAL CYCLONES NEW DELHI DATED 15.08.2022

SPECIAL TROPICAL WEATHER OUTLOOK FOR NORTH INDIAN OCEAN (THE BAY OF BENGAL AND ARABIAN SEA) VALID FOR NEXT 120 HOURS ISSUED AT 1500 UTC OF 15.08.2022 BASED ON 1200 UTC OF 15.08.2022.

INDIA IS CELEBRATING ITS 76TH INDEPENDENCE DAY. INDIA METEOROLOGICAL DEPARTMENT WISHES A VERY HAPPY INDEPENDENCE DAY TO ALL.

BAY OF BENGAL:

SUBJECT: DEPRESSION OVER EAST MADHYA PRADESH

THE DEPRESSION OVER EAST MADHYA PRADESH AND ADJOINING CHHATTISGARH MOVED WEST-NORTHWESTWARDS WITH A SPEED OF 24 KMPH DURING LAST 6 HOURS AND LAY CENTERED AT 1200 UTC OF 15TH AUGUST OVER EAST MADHYA PRADESH NEAR LATITUDE 23.3N & LONGITUDE 79.8E, ABOUT 20 KM NORTHWEST OF JABALPUR (42675), 120 KM EAST-SOUTHEAST OF SAGAR (42671) AND 290 KM EAST-SOUTHEAST OF GUNA (42559).

IT IS VERY LIKELY TO CONTINUE TO MOVE WEST-NORTHWESTWARDS AND WEAKEN GRADUALLY TO A WELL MARKED LOW PRESSURE AREA BY 16TH AUGUST.

AS PER INSATD 3D IMAGERY AT 1200 UTC, SCATTERED TO BROKEN LOW AND MEDIUM CLOUDS WITH EMBEDDED INTENSE TO VERY INTENSE CONVECTION LAY OVER CHHATTISGARH, ADJOINING EAST MADHYA PRADESH AND ODISHA . MINIMUM CLOUD TOP TEMPERATURE IS MINUS 80⁰C.

ESTIMATED MAXIMUM SUSTAINED WIND SPEED AROUND SYSTEM CENTRE IS 25 KNOTS GUSTING TO 35 KNOTS. ESTIMATED CENTRAL PRESSURE IS 993 HPA.

ARABIAN SEA:

SCATTERED TO BROKEN LOW AND MEDIUM CLOUDS WITH EMBEDDED INTENSE TO VERY INTENSE CONVECTION LAY OVER NORTHEAST ARABIAN SEA AND ADJOINING PAKISTAN COAST. MINIMUM CLOUD TOP TEMPERATURE IS MINUS 93⁰C.

SCATTERED LOW AND MEDIUM CLOUDS WITH EMBEDDED MODERATE TO INTENSE CONVECTION LAY OVER EASTCENTRAL OFF MAHARASHTRA COAST, SOUTHEAST ARABIAN SEA AND LAKSHADWEEP ISLANDS. SCATTERED LOW AND MEDIUM CLOUDS WITH EMBEDDED WEAK TO MODERATE CONVECTION LAY OVER REST PARTS OF ARABIAN SEA, GULF OF CAMBAY AND COMORIN AREA.

PROBABILITY OF CYCLOGENESIS (FORMATION OF DEPRESSION) DURING NEXT 120 HRS:

24 HOURS	24-48 HOURS	48-72 HOURS	72-96 HOURS	96-120 HOURS
NIL	NIL	NIL	NIL	NIL

REMARKS:

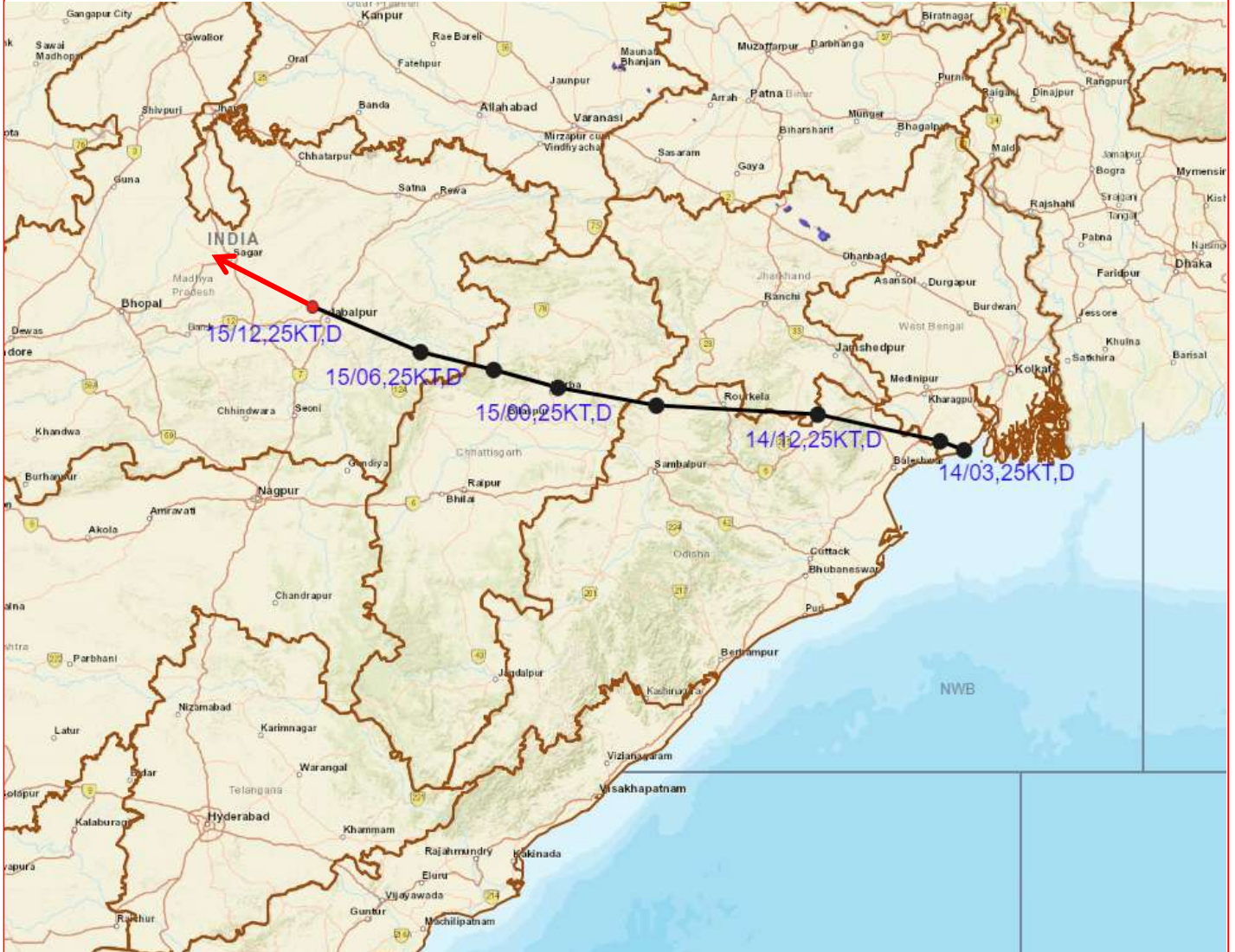
LOW LEVEL VORTICITY IS THE SAME AND IS AROUND $150 \times 10^{-6} \text{ S}^{-1}$ OVER THE SYSTEM AREA WITH VERTICAL EXTENSION UPTO 200 HPA LEVEL. LOW LEVEL CONVERGENCE IS THE SAME AND IS AROUND $20 \times 10^{-5} \text{ S}^{-1}$ OVER SYSTEM AREA. POSITIVE UPPER LEVEL DIVERGENCE IS THE SAME AND IS AROUND $20 \times 10^{-5} \text{ S}^{-1}$ TO THE WEST OF SYSTEM CENTRE AND ALONG THE FORECAST TRACK. WIND SHEAR IS LOW (05-10 KNOTS) OVER SYSTEM AREA AND ALONG THE FORECAST TRACK. UNDER THESE FAVOURABLE ENVIRONMENTAL CONDITIONS, THE SYSTEM IS LIKELY TO MAINTAIN ITS INTENSITY DURING NEXT 12 HOURS.

MOST OF THE NWP MODELS ARE UNANIMOUSLY INDICATING WEST-NORTHWESTWARDS MOVEMENT OF THE SYSTEM AND SYSTEM TO MAINTAIN IT'S INTENSITY DURING NEXT 12 HOURS.

(ANANDA KUMAR DAS)
SCIENTIST E,
RSMC, NEW DELHI



OBSERVED AND FORECAST TRACK OF DEPRESSION OVER EAST MADHYA PRADESH BASED ON 1200 UTC OF 15th AUGUST, 2022



DATE/TIME IN UTC

IST=UTC + 0530

L: LOW PRESSURE AREA

WML: WELL MARKED LOW PRESSURE AREA

D: DEPRESSION (17-27 KT)

DD: DEEP DEPRESSION (28-33 KT)

CS: CYCLONIC STORM (34-47 KT)

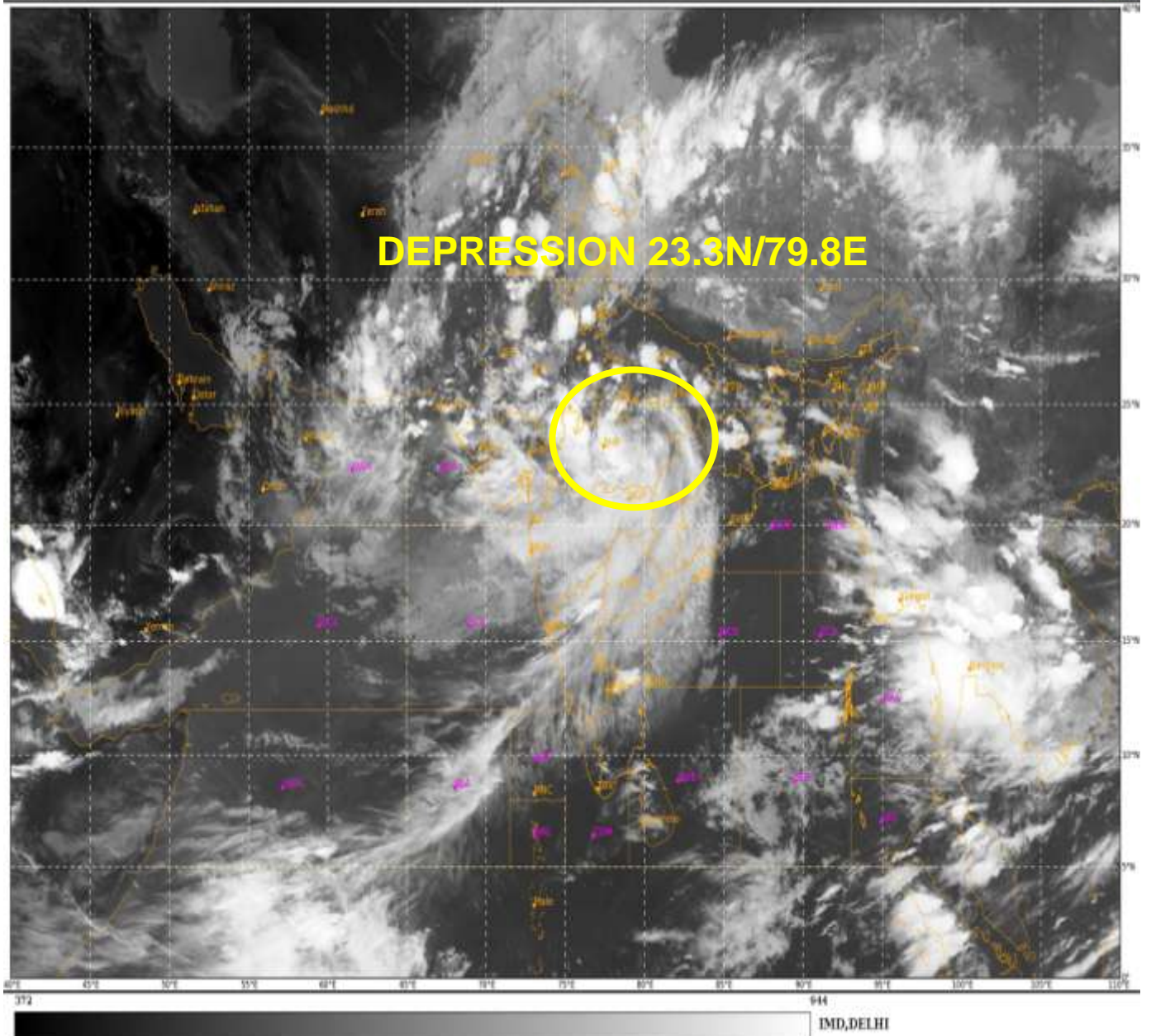
SCS: SEVERE CYCLONIC STORM (48-63KT)

VSCS: VERY SEVERE CYCLONIC STORM (64-89 KT)

ESCS: EXTREMELY SEVERE CYCLONIC STORM (90-119 KT)

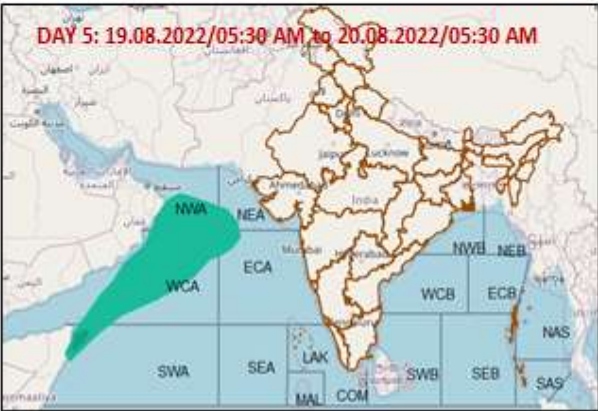
SuCS: SUPER CYCLONIC STORM (≥ 120 KT)

- LESS THAN 34 KT
- 34-47 KT
- ≥ 48 KT
- OBSERVED TRACK
- FORECAST TRACK
- CONE OF UNCERTAINTY



India Meteorological Department wishes you a Happy Independence Day

Fishermen Warning Graphics

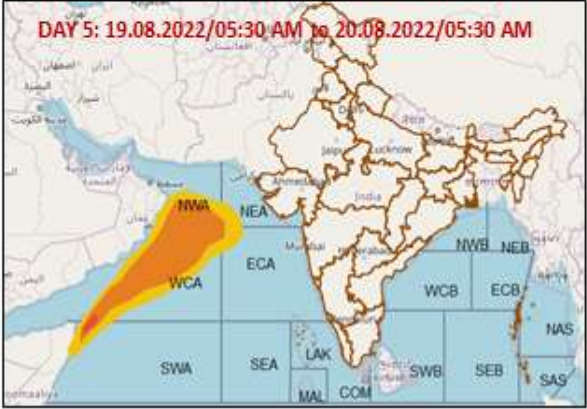
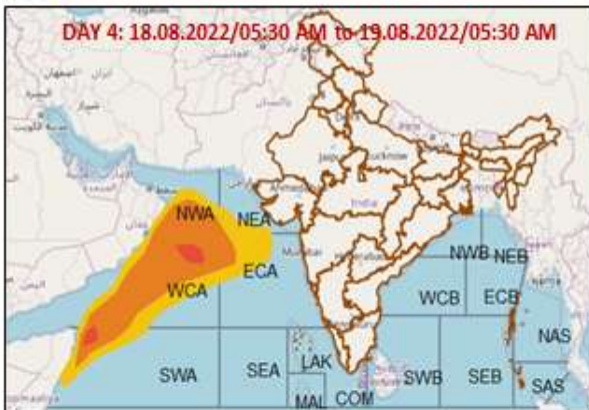
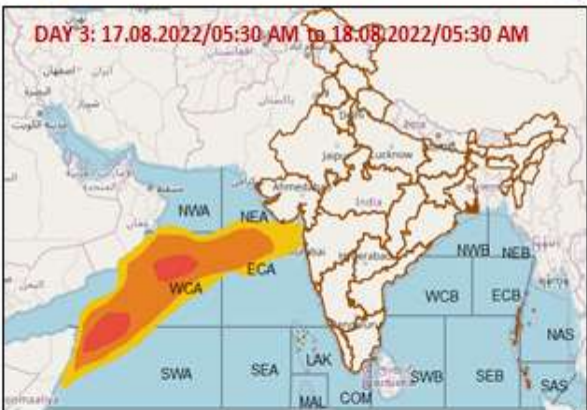
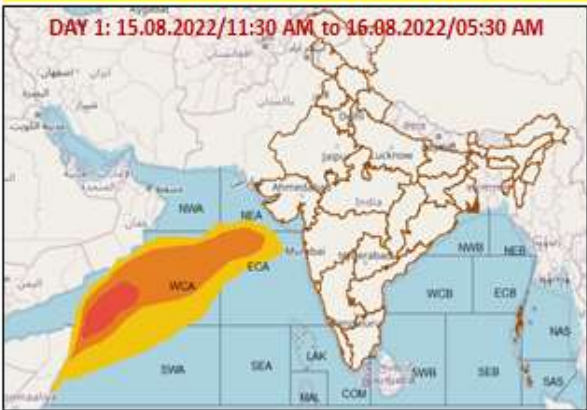


	Squally WX with wind speed 40-50 gusting to 60 kmph
	Squally WX with wind speed 45-55 gusting to 65 kmph
	Squally wind speed 45-55kmph gusting to 65 kmph
	Squally wind speed 50-60kmph gusting to 70 kmph

Cloud distribution: (a) Isolated: <25%, Scattered:25-50%, Broken: 51-75%, Solid:>75%, Convection Intensity: (a) Weak: Cloud Top Temperature (CTT) >-25°C, (b) Moderate: CTT: - 25°C to -40°C, (c) Intense: CTT: - 41°C to -70°C and (d) Very Intense: : Less than -70°C
 PROBABILITY OF CYCLOGENESIS (FORMATION OF DEPRESSION): NIL: 0%, LOW: 1-33%, , MODERATE: 34-66% AND HIGH: 67-100%
 This is a guidance Bulletin for WMO/ESCAP Panel Member countries. Visit respective National websites for Country specific Bulletins

India Meteorological Department wishes you a Happy Independence Day

Probability of exceedance of maximum sustained winds ≥ 45 kmph



	Probability of exceedance
	Low (1-33%)
	Moderate (34-67%)
	High (68-100%)

Cloud distribution: (a) Isolated: <25%, Scattered:25-50%, Broken: 51-75%, Solid:>75%, Convection Intensity: (a) Weak: Cloud Top Temperature (CTT) >-25°C, (b) Moderate: CTT: - 25°C to -40°C, (c) Intense: CTT: - 41°C to -70°C and (d) Very Intense: : Less than -70°C
 PROBABILITY OF CYCLOGENESIS (FORMATION OF DEPRESSION): NIL: 0%, LOW: 1-33%, , MODERATE: 34-66% AND HIGH: 67-100%
 This is a guidance Bulletin for WMO/ESCAP Panel Member countries. Visit respective National websites for Country specific Bulletins